

## 12 Offizielle SB Ölungen

### Art. 12 Offizielle Ölungen bei der Schweizermeisterschaften (SM)

Art. 12.1 Die Offizielle Ölungen für die SM sind von der SB Sportkommission mit der Einwilligung der SB Vorstand fest definiert worden.

Art. 12.2 Die Offizielle Ölungen sind:

Roadway	37ft	26.45ml	Ratio 1:4.77
Nufenen	39ft	24.55ml	Ratio 1:4.04
San Gotthard	40ft	25.15ml	Ratio 1:3.00
Furka	41ft	25.55ml	Ratio 1:3.50
Gran Saint Bernard	43ft	24.90ml	Ratio 1:3.67
Route 66	45ft	23.68ml	Ratio 1:4.00

Art. 12.3 Nur dieser Ölungen (Art. 12.2) sind bei der SM gestatten im

Einzel  
Doppel  
Nationalliga  
Senioren  
Junioren

### Art. 13 Allgemein erlaubte Ölungen

Art. 13.1 Bei offiziellem Turnier die in der SB Kalender aufgeführt sind, ist jede Ölung bis eine maximale Ratio von 1:6 erlaubt.

Art. 13.2 Das gleiche gilt für die Sektion Ligen und Sektion Meisterschaften.

Art 13.3 Nur unten dieser Bedienungen ist eine offizieller SB Schnitt garantiert.

# ROUTE 66 (40 uL)



Oil Pattern Distance: **45 Feet**  
 Forward Oil Total: **11 mL**  
 Forward Boards Crossed: **275 Boards**

Reverse Brush Drop: **45 Feet**  
 Reverse Oil Total: **12.68 mL**  
 Reverse Boards Crossed: **317 Boards**

Oil Per Board: **40 uL**  
 Volume Oil Total: **23.68 mL**  
 Total Boards Crossed: **592 Boards**

Start	Stop	Loads	Speed	Crossed	Start	End	Feet	T.Oil
1	2L 2R	4	14	148	0.0	5.9	5.9	5920
2	12L 12R	2	14	34	5.9	9.8	3.9	1360
3	13L 13R	3	14	45	9.8	15.7	5.9	1800
4	14L 14R	2	18	26	15.7	20.8	5.1	1040
5	15L 15R	2	18	22	20.8	25.9	5.1	880
6	2L 2R	0	18	0	25.9	33.0	7.1	0
7	2L 2R	0	26	0	33.0	40.0	7.0	0
8	2L 2R	0	30	0	40.0	45.0	5.0	0

Conditioner:  
Type In or Select One

TransferType:  
Type In or Select One

Forward



Reverse



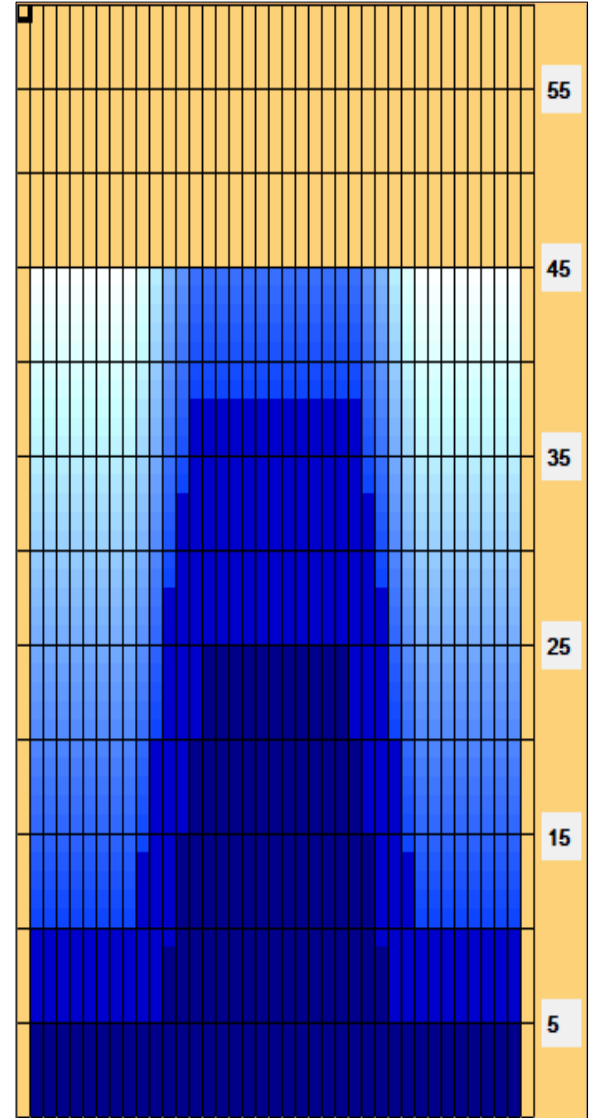
Combined



Buff

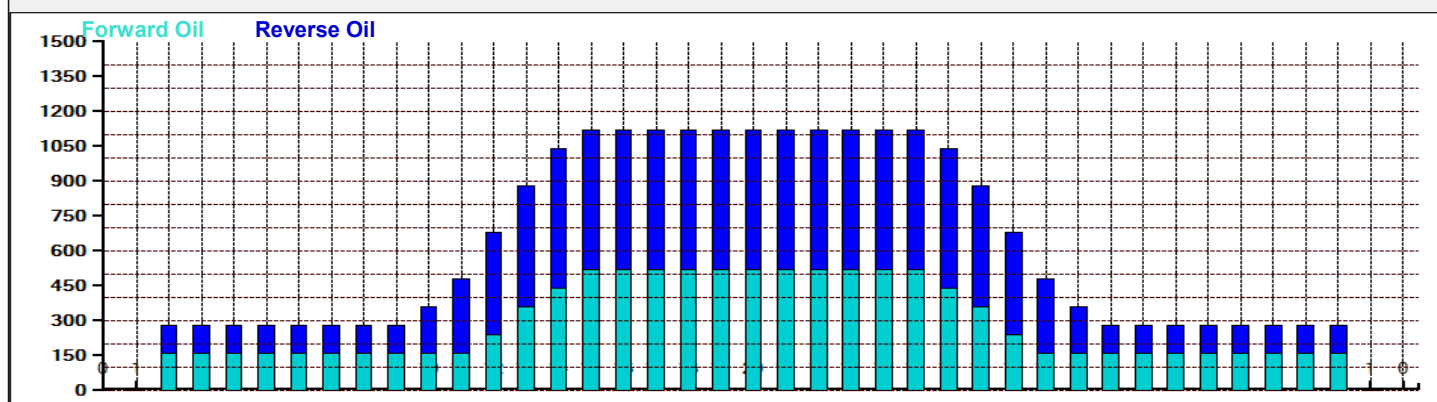


Start	Stop	Loads	Speed	Crossed	Start	End	Feet	T.Oil
1	2L 2R	0	30	0	45.0	38.0	-7.0	0
2	14L 14R	2	18	26	38.0	32.9	-5.1	1040
3	13L 13R	2	18	30	32.9	27.8	-5.1	1200
4	12L 12R	3	18	51	27.8	20.2	-7.6	2040
5	11L 11R	3	14	57	20.2	14.3	-5.9	2280
6	10L 10R	2	14	42	14.3	10.4	-3.9	1680
7	2L 2R	3	10	111	10.4	6.2	-4.2	4440
8	2L 2R	0	10	0	6.2	0.0	-6.2	0



Kegel Kode 4345 - Route 66 is one the longest road in America and at 45 feet in length, so is this pattern in the series. As with most long oil patterns, the optimum line is usually one that is closer to the pocket or more towards the inside portion of the lane. The greatest slope of conditioner on ROUTE 66 is from the 11th board to the 16th board so players should target along this route. Outside of the 11th board, the pattern is flat so there will be very little room for error. Because of the long length of the pattern, a smooth, clean exit from the thumb hole to get the ball rolling is imperative on ROUTE 66!

Item	3L-7L:18L-18R	8L-12L:18L-18R	13L-17L:18L-18R	18L-18R:17R-13R	18L-18R:12R-8R	18L-18R:7R-3R
Description	Outside Track:Middle	Middle Track:Middle	Inside Track:Middle	Middle: Inside Track	Middle:Middle Track	Middle:Outside Track
Track Zone Ratio	4	2.69	1.06	1.06	2.69	4



# SSS-Grand-Saint-Bernard-43(50ul)



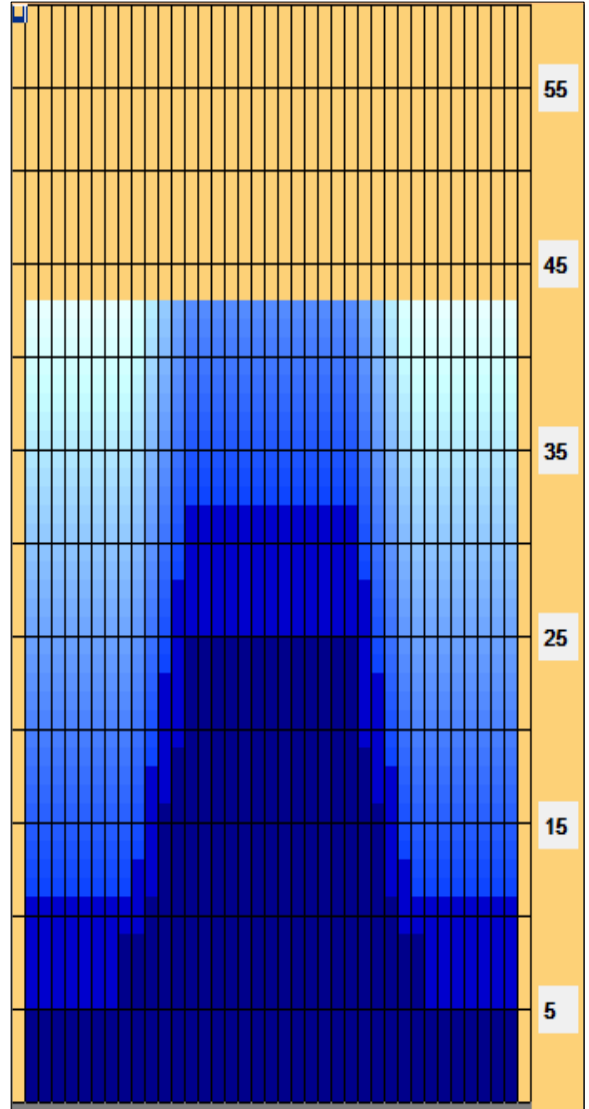
**Oil Pattern Distance:** 43 Feet      **Reverse Brush Drop:** 43 Feet      **Oil Per Board:** 50 uL  
**Forward Oil Total:** 14.4 mL      **Reverse Oil Total:** 10.5 mL      **Volume Oil Total:** 24.9 mL  
**Forward Boards Crossed:** 288 Boards      **Reverse Boards Crossed:** 210 Boards      **Total Boards Crossed:** 498 Boards

	Start	Stop	Loads	Speed	Crossed	Start	End	Feet	T.Oil
1	2L	2R	4	14	148	0.0	5.9	5.9	7400
2	9L	9R	2	14	46	5.9	9.8	3.9	2300
3	11L	11R	1	14	19	9.8	11.7	1.9	950
4	12L	12R	2	18	34	11.7	16.8	5.1	1700
5	13L	13R	1	18	15	16.8	19.3	2.5	750
6	14L	14R	2	22	26	19.3	25.5	6.2	1300
7	2L	2R	0	22	0	25.5	33.0	7.5	0
8	2L	2R	0	26	0	33.0	43.0	10.0	0

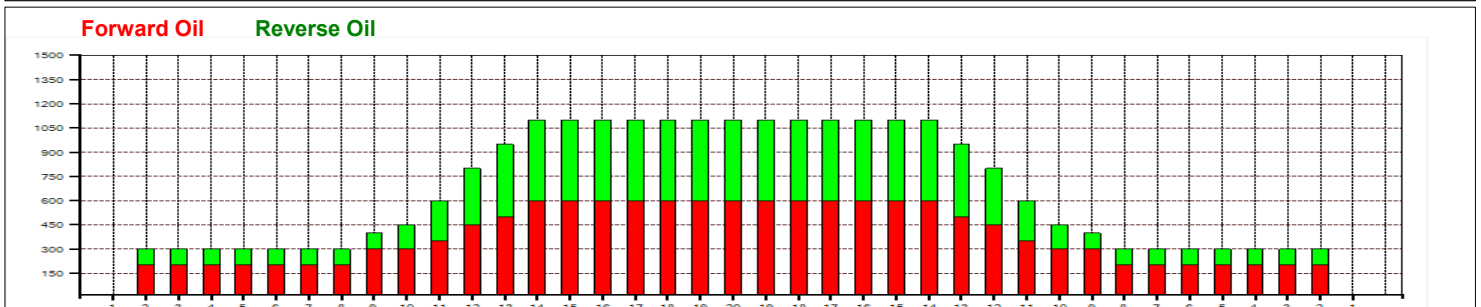
	Start	Stop	Loads	Speed	Crossed	Start	End	Feet	T.Oil
1	2L	2R	0	30	0	43.0	32.0	-11.0	0
2	14L	14R	1	26	13	32.0	28.4	-3.6	650
3	13L	13R	2	18	30	28.4	23.3	-5.1	1500
4	12L	12R	2	18	34	23.3	18.2	-5.1	1700
5	11L	11R	2	18	38	18.2	13.1	-5.1	1900
6	10L	10R	1	14	21	13.1	11.2	-1.9	1050
7	2L	2R	2	14	74	11.2	7.3	-3.9	3700
8	2L	2R	0	10	0	7.3	0.0	-7.3	0

Conditioner:  
 Type In or Select  
 One  
  
 TransferType:  
 Type In or Select  
 One

- Forward
- Reverse
- Combined
- Buff



Item	3L-7L:18L-18R	8L-12L:18L-18R	13L-17L:18L-18R	18L-18R:17R-13R	18L-18R:12R-8R	18L-18R:7R-3R
Description	Outside Track:Middle	Middle Track:Middle	Inside Track:Middle	Middle: Inside Track	Middle:Middle Track	Middle:Outside Track
Track Zone Ratio	3.67	2.16	1.03	1.03	2.16	3.67



# Furka 41 ft



**Oil Pattern Distance:** 41 Feet      **Reverse Brush Drop:** 35 Feet      **Oil Per Board:** 50 uL  
**Forward Oil Total:** 15.75 mL      **Reverse Oil Total:** 9.8 mL      **Volume Oil Total:** 25.55 mL  
**Forward Boards Crossed:** 315 Boards      **Reverse Boards Crossed:** 196 Boards      **Total Boards Crossed:** 511 Boards

	Start	Stop	Loads	Speed	Crossed	Start	End	Feet	T.Oil
1	2L	2R	4	14	148	0.0	5.9	5.9	7400
2	8L	8R	1	14	25	5.9	7.8	1.9	1250
3	10L	10R	2	14	42	7.8	11.7	3.9	2100
4	11L	11R	2	18	38	11.7	16.8	5.1	1900
5	12L	12R	2	18	34	16.8	21.9	5.1	1700
6	13L	13R	1	18	15	21.9	24.4	2.5	750
7	14L	14R	1	22	13	24.4	27.5	3.1	650
8	2L	2R	0	22	0	27.5	36.0	8.5	0
9	2L	2R	0	30	0	36.0	41.0	5.0	0

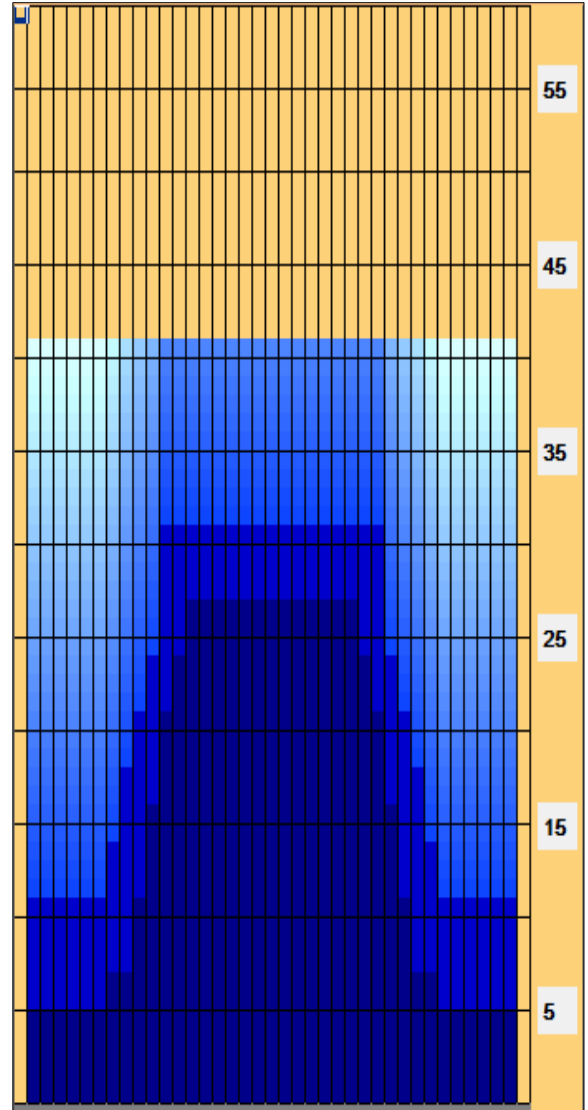
Navigation: Forward Reverse More

	Start	Stop	Loads	Speed	Crossed	Start	End	Feet	T.Oil
1	2L	2R	0	30	0	41.0	31.0	-10.0	0
2	12L	12R	2	26	34	31.0	23.7	-7.3	1700
3	11L	11R	1	22	19	23.7	20.6	-3.1	950
4	10L	10R	1	22	21	20.6	17.5	-3.1	1050
5	9L	9R	1	22	23	17.5	14.4	-3.1	1150
6	8L	8R	1	22	25	14.4	11.3	-3.1	1250
7	2L	2R	2	14	74	11.3	7.4	-3.9	3700
8	2L	2R	0	14	0	7.4	0.0	-7.4	0

Navigation: Forward Reverse More

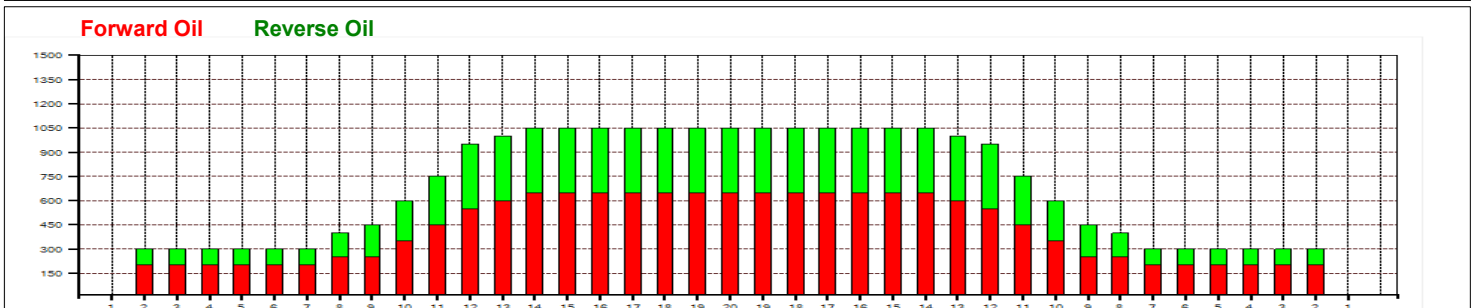
Conditioner:  
 Type In or Select  
 One  
  
 TransferType:  
 Type In or Select  
 One

- Forward
- Reverse
- Combined
- Buff



Drop Brush In reverse @ 35

Item	3L-7L:18L-18R	8L-12L:18L-18R	13L-17L:18L-18R	18L-18R:17R-13R	18L-18R:12R-8R	18L-18R:7R-3R
Description	Outside Track:Middle	Middle Track:Middle	Inside Track:Middle	Middle: Inside Track	Middle:Middle Track	Middle:Outside Track
Track Zone Ratio	3.5	1.67	1.01	1.01	1.67	3.5



# San Gottardo 40 ft



**Oil Pattern Distance:** 40 Feet      **Reverse Brush Drop:** 35 Feet      **Oil Per Board:** 50 uL  
**Forward Oil Total:** 14.85 mL      **Reverse Oil Total:** 10.3 mL      **Volume Oil Total:** 25.15 mL  
**Forward Boards Crossed:** 297 Boards      **Reverse Boards Crossed:** 206 Boards      **Total Boards Crossed:** 503 Boards

	Start	Stop	Loads	Speed	Crossed	Start	End	Feet	T.Oil
1	2L	2R	4	14	148	0.0	5.9	5.9	7400
2	9L	9R	1	14	23	5.9	7.8	1.9	1150
3	11L	11R	2	14	38	7.8	11.7	3.9	1900
4	12L	12R	2	18	34	11.7	16.8	5.1	1700
5	13L	13R	2	18	30	16.8	21.9	5.1	1500
6	14L	14R	1	22	13	21.9	25.0	3.1	650
7	15L	15R	1	22	11	25.0	28.1	3.1	550
8	2L	2R	0	22	0	28.1	35.0	6.9	0
9	2L	2R	0	26	0	35.0	40.0	5.0	0

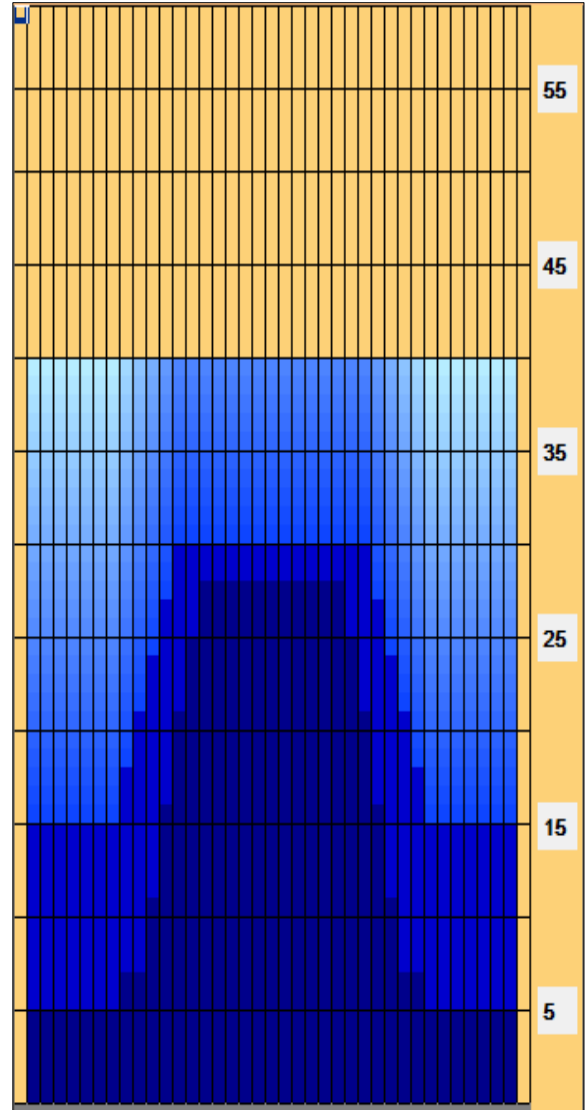
Navigation: Forward Reverse More

	Start	Stop	Loads	Speed	Crossed	Start	End	Feet	T.Oil
1	2L	2R	0	30	0	40.0	30.0	-10.0	0
2	13L	13R	1	22	15	30.0	26.9	-3.1	750
3	12L	12R	1	22	17	26.9	23.8	-3.1	850
4	11L	11R	1	22	19	23.8	20.7	-3.1	950
5	10L	10R	1	22	21	20.7	17.6	-3.1	1050
6	9L	9R	1	18	23	17.6	15.1	-2.5	1150
7	2L	2R	3	18	111	15.1	7.5	-7.6	5550
8	2L	2R	0	14	0	7.5	0.0	-7.5	0

Navigation: Forward Reverse More

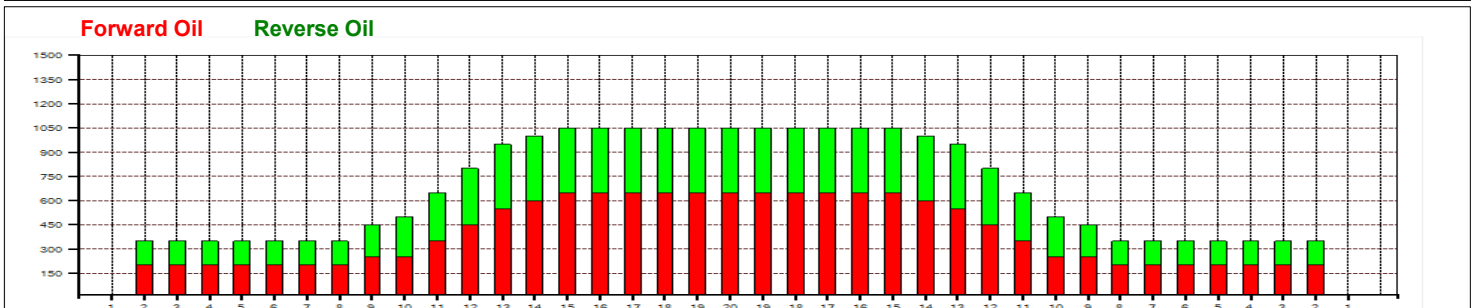
Conditioner:  
 Type In or Select One  
  
 TransferType:  
 Type In or Select One

- Forward
- Reverse
- Combined
- Buff



Drop Brush In Reverse @ 35

Item	3L-7L:18L-18R	8L-12L:18L-18R	13L-17L:18L-18R	18L-18R:17R-13R	18L-18R:12R-8R	18L-18R:7R-3R
Description	Outside Track:Middle	Middle Track:Middle	Inside Track:Middle	Middle: Inside Track	Middle:Middle Track	Middle:Outside Track
Track Zone Ratio	3	1.91	1.03	1.03	1.91	3



# Nufenen 39



**Oil Pattern Distance:** 39 Feet      **Reverse Brush Drop:** 33 Feet      **Oil Per Board:** 50 uL  
**Forward Oil Total:** 14.2 mL      **Reverse Oil Total:** 10.35 mL      **Volume Oil Total:** 24.55 mL  
**Forward Boards Crossed:** 284 Boards      **Reverse Boards Crossed:** 207 Boards      **Total Boards Crossed:** 491 Boards

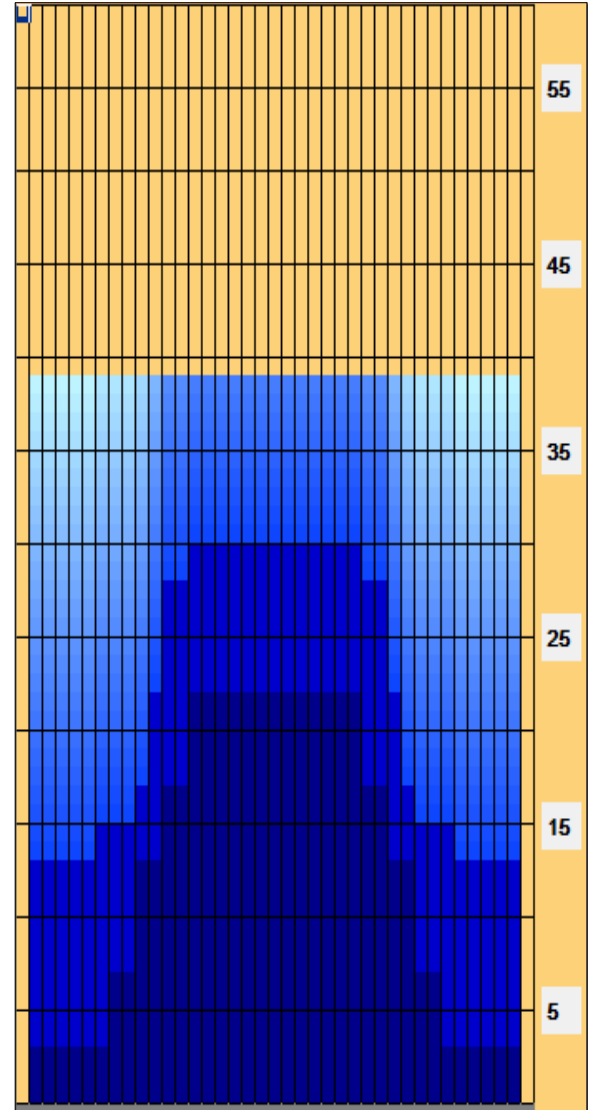
	Start	Stop	Loads	Speed	Crossed	Start	End	Feet	T.Oil
1	2L	2R	3	14	111	0.0	3.9	3.9	5550
2	8L	8R	2	14	50	3.9	7.8	3.9	2500
3	10L	10R	3	14	63	7.8	13.7	5.9	3150
4	12L	12R	2	14	34	13.7	17.6	3.9	1700
5	14L	14R	2	18	26	17.6	22.7	5.1	1300
6	2L	2R	0	18	0	22.7	28.0	5.3	0
7	2L	2R	0	22	0	28.0	34.0	6.0	0
8	2L	2R	0	26	0	34.0	39.0	5.0	0

	Start	Stop	Loads	Speed	Crossed	Start	End	Feet	T.Oil
1	2L	2R	0	30	0	39.0	30.0	-9.0	0
2	14L	14R	1	18	13	30.0	27.5	-2.5	650
3	12L	12R	2	18	34	27.5	22.4	-5.1	1700
4	11L	11R	2	18	38	22.4	17.3	-5.1	1900
5	10L	10R	1	18	21	17.3	14.8	-2.5	1050
6	7L	7R	1	14	27	14.8	12.9	-1.9	1350
7	2L	2R	2	14	74	12.9	9.0	-3.9	3700
8	2L	2R	0	14	0	9.0	0.0	-9.0	0

Conditioner:  
Type In or Select One

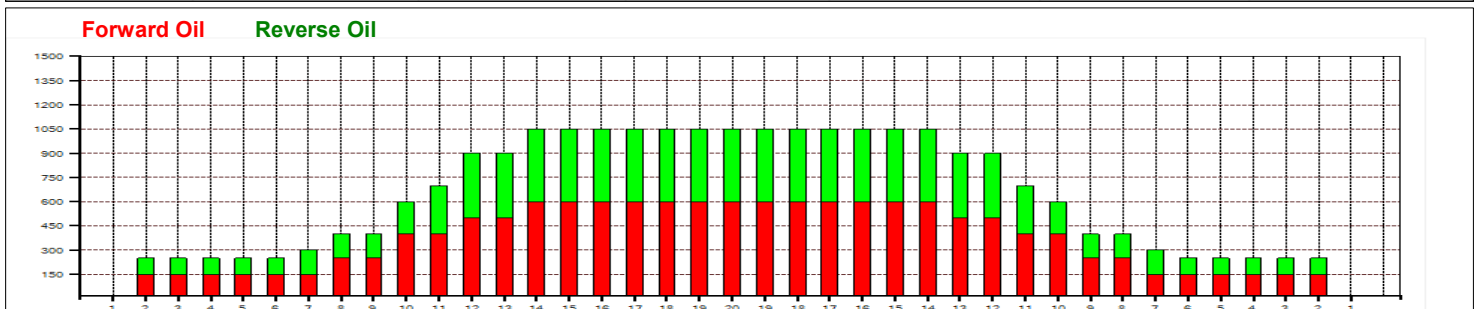
TransferType:  
Type In or Select One

- Forward
- Reverse
- Combined
- Buff



Brush Drop In Reverse @ 33 Feet

Item	3L-7L:18L-18R	8L-12L:18L-18R	13L-17L:18L-18R	18L-18R:17R-13R	18L-18R:12R-8R	18L-18R:7R-3R
Description	Outside Track:Middle	Middle Track:Middle	Inside Track:Middle	Middle: Inside Track	Middle:Middle Track	Middle:Outside Track
Track Zone Ratio	4.04	1.75	1.03	1.03	1.75	4.04



# BROADWAY V2



Oil Pattern Distance: **37 Feet**  
 Forward Oil Total: **15.7 mL**  
 Forward Boards Crossed: **314 Boards**

Reverse Brush Drop: **36 Feet**  
 Reverse Oil Total: **10.75 mL**  
 Reverse Boards Crossed: **215 Boards**

Oil Per Board: **50 uL**  
 Volume Oil Total: **26.45 mL**  
 Total Boards Crossed: **529 Boards**

Start	Stop	Loads	Speed	Crossed	Start	End	Feet	T.Oil
1	2L 2R	2	14	74	0.0	1.9	1.9	3700
2	4L 4R	1	14	33	1.9	3.8	1.9	1650
3	5L 5R	1	14	31	3.8	5.7	1.9	1550
4	7L 7R	2	14	54	5.7	9.6	3.9	2700
5	9L 9R	2	14	46	9.6	13.5	3.9	2300
6	11L 10R	3	18	60	13.5	21.1	7.6	3000
7	13L 12R	1	18	16	21.1	23.6	2.5	800
8	2L 2R	0	22	0	23.6	31.0	7.4	0
9	2L 2R	0	26	0	31.0	37.0	6.0	0

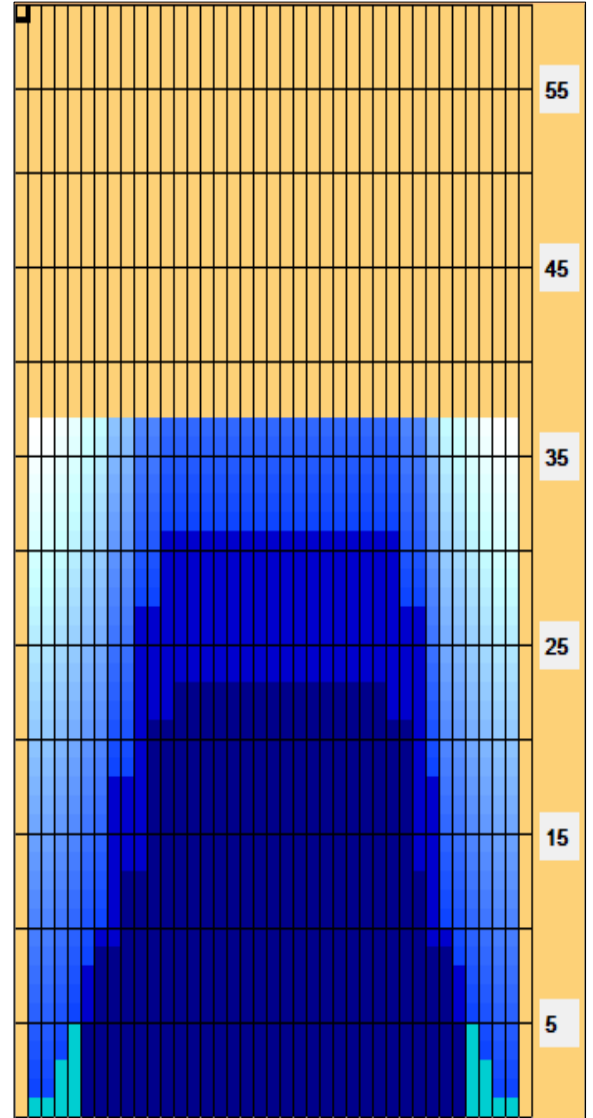
Conditioner: Type In or Select One  
 TransferType: Type In or Select One

Forward Reverse More

Start	Stop	Loads	Speed	Crossed	Start	End	Feet	T.Oil
1	2L 2R	0	30	0	37.0	31.0	-6.0	0
2	12L 11R	1	26	18	31.0	27.4	-3.6	900
3	10L 9R	3	22	66	27.4	18.1	-9.3	3300
4	8L 8R	3	18	75	18.1	10.5	-7.6	3750
5	7L 7R	1	18	27	10.5	8.0	-2.5	1350
6	6L 6R	1	18	29	8.0	5.5	-2.5	1450
7	2L 2R	0	14	0	5.5	0.0	-5.5	0

Forward Reverse More

- Forward
- Reverse
- Combined
- Buff



Item	3L-7L:18L-18R	8L-12L:18L-18R	13L-17L:18L-18R	18L-18R:17R-13R	18L-18R:12R-8R	18L-18R:7R-3R
Description	Outside Track:Middle	Middle Track:Middle	Inside Track:Middle	Middle: Inside Track	Middle:Middle Track	Middle:Outside Track
Track Zone Ratio	4.77	1.33	1	1	1.21	4.77

